

MARCH
2021



PRINCIPAL

Kevin Merkley

VICE-PRINCIPAL

Sumir Bansal

SUPERINTENDENT

Clelia Della-Rovere

TRUSTEE

Ron Lynn

School Day Schedule

8:45 am Entry

8:55-10:35

Learning Block

10:35 - 11:05

Recess

11:05– 12:45

Learning Block

12:45-1:45

Lunch

1:45-3:25

Learning Block

3:25

Dismissal

The Stonebridge Story

Website: <http://www.yrdsb.ca/schools/stonebridge.ps>

Email: Stonebridge.ps@yrdsb.ca

Follow us on twitter: @StonebridgePS

A Message from the Administration

Welcome to March! The month of March also marks the anticipated arrival of Spring. Stonebridge is excited by the energy that Spring brings.

In February we were able to come back together as a community with school reopening, and we were greeted with a snow day! Last month, we were fortunate to have our Trustee Ron Lynne and our new Superintendent of schools Dr. Clelia Della-Rovere join us along with about 40 families to celebrate Lunar New Year. We had Wensha and Sylvia share the [story of the Lantern](#), and students from Grade 1 to Grade 8 share stories and share how they celebrate Lunar New Year. We finished off the evening with a Grade 4 student in EVS sharing the [Story of the Nian](#). We want to thank our amazing MC's for the evening Lucy and Amy who also created a video to help all our families learn how to [make their own lanterns](#)!

We had [Duane Gibson](#) return to work with our Grade 6 to 8 students to deepen our learning about Black History and the importance of well-being. This virtual presentation was supported through the Parents Reaching Out Grant from the Ministry of Education through our School Council.

As we start planning for next year, if you have any specific requests for the placement of your child for next year, please send your request to Mr. Bansal via email (sumir.bansal@yrdsb.ca) by May 1st. If you wish to set up a time to speak over the phone or in person that can be arranged as well. Please keep in mind that families should not be requesting specific teachers or particular grade arrangements (e.g. single/combined grades) as teaching positions and school organization changes every year. Requests of this nature will not be considered. Please describe your child's learning profile and the type of teaching style that will support your child (e.g. My child requires a lot of structure, My child learns best through the Arts, my child is strong in Literacy but needs more support in Math, etc.).

We greatly appreciate your support in following the [COVID-19 School and Child Care Screening Tool](#) carefully every day and for following the steps it provides if your child has one or more of the symptoms. Doing so keeps everyone safe at school, and we appreciate your partnership during these times.

Send your child to school with all that they need as we can not receive any items during the school day (e.g. lunches left at home, extra Winter clothing, school supplies, etc.). Please remember to check [The Weather Network](#) for how to dress appropriately for the weather as our students are outside for 30 minutes in the morning, and 40 minutes at lunch time. Please send extra gloves and clothing to school if your child often returns home with wet items.

If items are mistakenly left at home by the students, please note we are unable to accept them at the school door once students have entered for the day.

We would like to remind you that we do have Quiet Space/Prayer Space for students or staff that need the space at any point during the day in the office area. If your child would like to use this space, please reach out to kevin.merkley@yrdsb.ca so that we can connect with your child to support their needs.

Your partners in education

A Message from the Administration continued

欢迎来到三月！三月份亦标志著一个将臨的春季。石橋社区十分高兴春天帶來的活力。

在二月份，我们学校社区可以一起回來重新开放，和有个大雪的一天作为庆賀！上月，我们很榮幸迎接一位新的教育局校董Ron Lynn 先生和我们一位新的校监Clelia Della-Rovere 博士。他们跟我们大概四十个家庭一起庆祝農曆新年。我们有Wensha 和Sylvia 分享「花灯的故事」[story of the Lantern](#),和一年級至八年級分享故事和有关他们如何庆祝農曆新年的趣事。最后我们的四年級同学在网上分享「年的故事」[Story of the Nian](#),

我们希望感谢我们当晚的司仪Lucy 和Amy，他们制作了一条短片協助我们所有家庭学习如何制作他们自己的花灯！[make their own lanterns!](#)

我们有 Duane Gibson老师回来跟我们六至八年级的学生一起加深学习黑人历史和身心健康的重要性。这个视频说明短片是由省教育部通过学校家长委员会的外展家长资助津贴赞助。

現在我們已经开始计划下学年，如果您有什么对您孩子的在新学年的编班特定要求，请在五月一日前电郵到Bansal 副校长 (sumir.bansal@yrdsb.ca)。如果您希望預約时间和他见面或电话联系，这都可以安排。请记住，家长们不应要求特定的老师或特別班別的要求（例如，单一/混合班）因为教学职位和学校架构每年都可能变动。因此，这种性质的要求不会被考虑。

请形容您的孩子的学习蓝本和那种的教育方式能支持您的孩子（例如，我的孩子需要很多的指示架构，我的孩子可以通过美艺有更好学习，我的孩子在语文比較強但数学需要更多支持，等等）

我们非常感谢您们每天谨慎遵守新冠狀病毒学校和托儿中心自我檢測工具[COVID-19 School and Child Care Screening Tool](#)。

更感谢，如果您的孩子有一个或以上的病癥时，您们跟进有关指示的步驟。您们的合作能使学校每一位安全，对您们在这段时期的配合支持，我们深感谢意。

请您们能在每天您的孩子來校上课时，把所有应帶著的都帶來。因为我们日间不可接收任何物件（例如午饭忘了留在家，额外的冬季衣物，学校物件等）为孩子如何按天气穿着适合衣物，因为学生会早上有30分钟在外面，中午飯后有40 分钟在外面，记得查看天气报告[The Weather Network](#)。如果您發現您孩子常帶些湿的衣物回家，请多帶些手套和衣物到学校。

如果有些学生忘了带什么物件回校，请注意，当学生进入学校，我们不可接受任何物件送到校门的。

我们亦希望提示一下，我们有在办公室内提供給学和教职人员一个清靜空间/祈祷空间，让他们有需要时使用。请直接电郵kevin.merkley@yrdsb.ca，我们会联系您的孩子以支持他们的需要。

谨此

您的教育伙伴

Sumir 副校长and 和 Kevin校长

IMPORTANT NOTICE:

Re-opening of York Region school for in-person learning

Wednesday, February 10, 2021

Dear staff and families,

On Wednesday, February 3, 2021 the Minister of Education announced schools in York Region will re-open for in-person learning on Tuesday, February 16, 2021.

York Region Public Health reassures you it is safe to return to school. We are working in close partnership with the school board and taking all appropriate steps for the health, safety and well-being of our school community. This includes updating our screening guidance and implementing more stringent protocols.

Updated screening guidance

Effective immediately, all students and staff are required to complete a York Region Public Health school and child-care screening tool. Daily confirmation of screening will be required for staff and secondary students.

Effective immediately:

- If a student or staff member has ONE symptom of COVID-19 they are required to stay home from school and child-care and get tested for COVID-19 at an [Assessment Centre](#)
- If anyone in a household has travelled outside of Canada, everyone must stay home from school and child-care until the 14-day quarantine period has finished, except for essential reasons
- If anyone in your household is sick and has not tested negative for COVID-19, or does not have an alternative diagnosis from a health-care provider, all others in the household must stay home from school and child-care until the results are known or an alternative diagnosis is provided
- If someone in the household is identified as a high-risk/close contact of a confirmed COVID-19 case, the whole household is required to stay home from school for the 14-day quarantine period, except for essential reasons**

**Please note: Individuals in a dismissed cohort do not need to have the rest of their household stay home from school or child-care unless contacted by Public Health. Public Health will work with the impacted school or child-care setting to identify individuals within cohorts that may be at increased risk of exposure to provide further direction.

Updated information on masking

To keep students and staff safe, the provincial government is advising all students in Grades 1 to 12 must wear non-medical or [cloth masks or face coverings](#) indoors in school, including in hallways and during classes, on school transportation and outdoors during recess where students cannot maintain physical distancing.

As an added layer of protection, the [Public Health Agency of Canada](#) recommends Canadians wear 3-layer cloth masks to prevent the spread of COVID-19. [Existing 2-layer cloth masks](#) can still be used as before.

Stay safe. Stay Informed.
york.ca/COVID19

rev. Last Updated February 9, 2021

Testing

York Region Public Health is working with the Ministry of Health and Ministry of Education to implement asymptomatic testing clinics and symptomatic rapid testing clinics across York Region. More information will be released shortly.

What happens if there is a case of COVID-19 in my child's class?

Any staff or children who have had close contact with a probable or confirmed COVID-19 case in a school will receive a letter from York Region Public Health advising them to stay at home for 14 days. Certain individuals may receive more instructions from Public Health if the investigation reveals the student/staff/essential visitor is at increased risk of exposure. These individuals will receive a phone call from Public Health to outline any additional requirements, including isolation of household contacts.

The identity of any person who contracts COVID-19 is protected under privacy legislation and cannot be shared. You would want this same privacy if your family was affected. We remain committed to respecting the privacy of all students and staff.

Schools in York Region have worked diligently to implement strict public health measures within the school environment such as physical distancing of students and staff, increased hand hygiene, cohorting of classrooms and the wearing of personal protective equipment (PPE) to reduce the risk of acquiring COVID-19. In addition to regular twice-daily cleaning of high touch surfaces, additional cleaning of affected areas will be undertaken to make sure the building remains safe.

Important reminders for all York Region residents

York Region Public Health reminds all residents about the importance of providing a history of all contacts and contact information if you test positive for COVID-19. This is crucial to the prevention and control of this infection.

Close contact continues to be the largest factor of spread of the COVID-19 virus in York Region. Providing Public Health with a history of all contacts and contact information if you test positive for COVID-19 helps us with contact tracing, our most effective tool to slow the spread of COVID-19 and interrupt further transmission.

It is important to be honest about your recent actions and interactions. Please work with us to support our contact tracing efforts; we are working hard to slow the spread of COVID-19 and keep you, your family and our communities safe.

It is important to follow the advice of York Region Public Health. Please visit york.ca/COVID19 and york.ca/SafeAtSchool for information on ways to protect yourself, your family and your school community.

COVID-19 SCHOOL AND CHILD CARE SCREENING TOOL

Students/children, all school board and child care staff and essential visitors must screen for COVID-19 every day before going to school or child care. Parents/guardians can fill this out on behalf of a child.

Date: (mm/dd/yyyy):

SCREENING QUESTIONS

1. Is the student/child/staff/essential visitor experiencing any of these symptoms (including mild and/or resolved)?

(Check the appropriate answer. Choose any/all that are new, worsening and not related to other known causes or conditions they already have)

Fever and/or chills

☐ Yes ☐ No

Temperature of 37.8 degrees Celsius/100 degrees Fahrenheit or higher

Cough or barking cough (croup)

☐ Yes ☐ No

Continuous, more than usual, making a whistling noise when breathing (not related to asthma, post-infectious reactive airways or other known causes or conditions they already have)

Shortness of breath

☐ Yes ☐ No

Out of breath, unable to breathe deeply (not related to asthma or other known causes or conditions they already have)

Decrease or loss of taste or smell

☐ Yes ☐ No

Not related to seasonal allergies, neurological disorders or other known causes or conditions they already have

Sore throat or difficulty swallowing

☐ Yes ☐ No

Painful swallowing (not related to seasonal allergies, acid reflux or other known causes or conditions they already have)

Runny or stuffy/congested nose

☐ Yes ☐ No

Not related to seasonal allergies, being outside in cold weather or other known causes or conditions they already have

Headache

☐ Yes ☐ No

Unusual, long-lasting (not related to tension-type headaches, chronic migraines or other known causes or conditions they already have)

Nausea, vomiting and/or diarrhea

☐ Yes ☐ No

Not related to irritable bowel syndrome, anxiety, menstrual cramps or other known causes or conditions they already have

Extreme tiredness or muscle aches

☐ Yes ☐ No

Unusual, fatigue, lack of energy, poor feeding in infants (not related to depression, insomnia, thyroid dysfunction, sudden injury or other known causes or conditions they already have)

Pink eye (Adults 18+ only)

☐ Yes ☐ No ☐ N/A

Conjunctivitis, not related to other known causes or conditions

Frequent Falls (For older adults)

☐ Yes ☐ No ☐ N/A

Stay safe. Stay Informed.

york.ca/COVID19

114 Last Updated February 24, 2021

2. In the last 14 days, has the student/child/staff/essential visitor travelled outside of Canada? ☐ Yes ☐ No
3. In the last 14 days, has the student/child/staff/essential visitor been identified as a "close contact" of someone who currently has COVID-19? ☐ Yes ☐ No
4. Has a doctor, health care provider or public health unit told you that the student/child/staff/essential visitor should currently be isolating (staying at home)? ☐ Yes ☐ No
5. Has someone in the household travelled outside of Canada in the last 14 days who is not exempt from self-isolation because they perform an essential job (e.g. truck driver, pilot) and currently live within the home (i.e. they are not isolating at a government-funded isolation centre)? ☐ Yes ☐ No
6. Has someone in the household been identified as a "close contact" of someone who currently has COVID-19? ☐ Yes ☐ No
7. Has someone in the household been part of a dismissed school or child care cohort in the past 14 days, and are currently at home isolating? ☐ Yes ☐ No
8. Is someone in the household sick with the COVID-19 symptoms outlined above (new or worsening) and does not yet have a negative COVID-19 test result or alternative diagnosis from a health-care provider? ☐ Yes ☐ No

If you selected "Yes" to any of the above, the student/ child/staff/essential visitor should stay home (do not go to school or child care)

SCREENING RESULTS

If you answered "YES" to question 1 and the student/child/staff/essential visitor has any ONE of the symptoms listed that are new or worsening and not related to known causes or conditions that they already have (including mild and/or resolved), do not go to school or child care

- The student/child/staff/essential visitor should self-isolate away from other household members and not leave except to get tested or for a medical emergency.
- All household members are required to stay home without exemption, even for essential reasons (except for medical care), until the symptomatic individual tests negative
- Book an appointment to get the student/child/staff/essential visitor a COVID-19 test:
 - If the result is negative, the student/child/staff/essential visitor and household members can return to normal activities (including school and child care) as long as they do not have a fever and symptoms are improving for at least 24 hours
 - If the result is positive, the student/child/staff/essential visitor who is COVID-19 positive must isolate for 10 days after symptoms first started AND household members must self-isolate as directed by Public Health; contact your school/child care provider to let them know about this result
- If the student/child/staff/essential visitor does not get tested for COVID-19, they must isolate for 10 days after symptoms first started AND household members should isolate for 14 days from their last exposure to the symptomatic household contact

If you answered "YES" to question 2, 3, or 4, do not go to school or child care

- The student/child/staff/essential visitor should self-isolate away from other household members for 14 days after last known exposure OR return from travel, or as directed by Public Health, and not leave except to get tested or for a medical emergency
- Book an appointment to get the student/child/staff/essential visitor a COVID-19 test (if not already completed)
- Follow the advice of Public Health. Individuals can return to school/child care after they are cleared by Public Health
- If student/child/staff/essential visitor develop symptoms, seek testing at a COVID-19 Assessment Centre and contact public health or a doctor/health-care provider for more advice

- All members of your household should stay home from school or child care for the duration of the close contact's 14 day isolation period regardless of whether or not the close contact tests negative.
- If the close contact remains asymptomatic and tests negative, household members may leave the home for essential reasons (e.g. groceries, essential work) but NOT attend school or child care.

For question 3 Only:

- All members of your household should stay home from school and child care for the duration of the close contact's 14 day isolation period regardless of whether or not the close contact tests negative.
- If the close contact remains asymptomatic and tests negative, household members may leave the home for essential reasons (e.g. groceries), but CANNOT attend school or child care.

If you answered "YES" to question 5, do not go to school or child care

- The student/child/staff/essential visitor should stay home from school child care and only leave the home for essential reasons for the full isolation period of the household member regardless of if the household member tests negative
- If the household member is symptomatic and/or has a positive COVID-19 test result, the student/child/staff/essential visitor and household members must self-isolate for 14 days after their last contact with the household member who is COVID-19 positive; the student/child/staff/essential visitor of the household member should also seek out testing as recommended by Public Health

If you answered "YES" to question 6 or 7, do not go to school or child care

- The student/child/staff/essential visitor should stay home from school and child care
- If the household contact identified as a "close contact" or in a dismissed cohort remains asymptomatic and tests negative, household members may leave the home for essential reasons (e.g. groceries) but CANNOT attend school or child care until the "close contact" or individual from the dismissed cohort has completed their 14 day self-isolation.
- If the household member who is a "close contact" or in a dismissed cohort becomes symptomatic and/or has a positive COVID-19 test result everyone in the household must self isolate. Notify the school or child care who will contact Public Health for next steps.

If you answered "YES" to question 8, do not go to school or child care

- All household contacts of symptomatic individuals are required to self isolate without exemption, even for essential reasons (except medical care), until the symptomatic individual receives a negative COVID-19 test result, or an alternative diagnosis by a health care professional
- If the household member's result is negative, the student/child/staff/essential visitor and household members can return to normal activities as long as they do not have a fever and symptoms are improving for at least 24 hours
- If the household member's result is positive, the student/child/staff/essential visitor and household members must self-isolate for 14 days after their last contact with the household member who is COVID-19 positive; the student/child/staff/essential visitor of the household member should also seek out testing as recommended by Public Health

Visit york.ca/SafeAtSchool for more information on ways to protect yourself, your family and your school community.

Kindergarten Registration 2021—2022



Kindergarten registration for September 2021 began on Friday, January 15 for the 2021-22 school year. Children who turn four or five years old during 2021, live within the school boundary and whose parents/guardians are public school tax supporters will be eligible to register for Kindergarten.

There are several ways you can register for Kindergarten:

Online - Families can access the online Kindergarten registration information at www.yrdsb.ca/kindergarten. It is recommended that families use a laptop or a desktop, rather than a mobile device to complete this registration. By email - Families can download the Elementary School Registration Form at www.yrdsb.ca/Kindergarten and email the completed form to their school email address. Email addresses can be found on the school website.

By phone - Families can request support from the school Principal/Vice-Principal to complete the registration form on their behalf by collecting the required information by phone. Families can request an interpreter, if needed, during this phone conversation. Call your local school.

By mail or appointment. You can mail completed applications to the school, or request an appointment to drop-off your completed paper application form. Families are asked to follow all school COVID-19 protocols while on site. All permitted visitors must wear a mask.

Please note, at this time, under our health and safety protocols, we cannot accept walk-in registrations. Once you have completed your application, the school will contact you to make an appointment to review and verify the required documents. Our Kindergarten programs are caring and welcoming where children learn through exploration, play and inquiry. You can learn more at www.yrdsb.ca/Kindergarten. We look forward to welcoming our new students and families to the school.

Welcome to Kindergarten Night will be held online at Stonebridge on Thursday, May 13th from 4:00 to 5:00pm. Link for online session will be sent to families closer to the date in May.



STONEBRIDGE PUBLIC SCHOOL

168 Stonebridge Dr.
Markham, Ont. L6C 2Z8
Tel: (905) 887-2427
Fax: (905) 887-7841

February 23, 2021

Dear Parents/Guardians,

It has been an unusual year and we miss our students who are in Virtual school, we have you and your families on our mind a lot and hope everyone is keeping well and safe.

Each year we raise funds for Stonebridge P.S. through Mr. Sub, Pasta lunch, Mr. Greek and Popcorn sales. As you know, we are unable to run any lunch programs and fundraisers that involve food, at the school this year.

We are hoping you will be excited as we are, to offer a fundraiser to ALL the students of Stonebridge P.S., whether you are attending Face-to-Face or Virtual School, you can participate in the Stonebridge Fundraiser Spirit wear/ Stonebridge P.S. Spirit wear/Grade 8 Grad wear. To give you an idea on how this fundraiser will work, only if you purchase items listed under Stonebridge Fundraiser Spirit wear, will part of the sales go back to Stonebridge P.S. to support programs such as our community library for the students of our school. We hope you understand and are able to support a fundraiser with a worthy cause.

Items will be available to purchase via School Cash Online (no cash or cheque) and no late orders will be accepted.

The fundraiser will run from February 23rd to March 12th and once the orders are received at the school, we will let them sit for 2 weeks prior to sorting the orders out. Once we have the orders ready for distribution we will send home orders with Face-to-Face students and will contact families of Virtual students (EVS) to sign up to pick up your order. You will then come to the school at the designated date/pickup time, ring the school doorbell and we will bring your order out to you.

If you have any questions please email Stonebridge.ps@yrdsb.ca

Thank you

Kevin Merkley
Principal

Sumir Bansal
Vice Principal

Spirit Wear Flyer

<p>ITEM # 1</p> <p>100% COTTON TEE</p>  <p>\$14</p> <p><small>BACK</small></p>  <p>GRAD TEE</p> <p><small>School Donation Price: \$20</small></p>	<p>ITEM # 2</p> <p>100% COTTON TEE LONG SLEEVE</p>  <p>\$18</p> <p>GRAD TEE</p> <p><small>School Donation Price: \$25</small></p>	<p>ITEM # 3</p> <p>ATC™ PRO SPUN™ LADIES' TEE: ATC3600L</p>  <p>\$12</p> <p>School Donation Price: \$17</p>	<p>ITEM # 4 #4L Ladies fit</p> <p>ATC™ PRO SPUN™ LONG SLEEVE TEE: ATC3615</p> <p><small>LADIES' NEWLY DESIGNED</small></p>  <p>\$18</p> <p>School Donation Price: \$25</p>	<p>ITEM # 5</p> <p>ATC™ EVERYDAY FLEECE SWEATPANTS: ATC3900</p>  <p>\$25</p> <p>School Donation Price: \$32</p>
<p>ITEM # 6</p> <p>100% COTTON GYM TEE</p>  <p>\$9</p> <p><small>School Donation Price: \$13</small></p>	<p>ITEM # 7</p> <p>100% COTTON TEE</p>  <p>\$9</p> <p><small>School Donation Price: \$13</small></p>	<p>ITEM # 8</p> <p>ATC™ EUROSPUN® RING SPUN BASEBALL TEE: ATC0822Y</p>  <p>\$15</p> <p><small>School Donation Price: \$21</small></p>	<p>ITEM # 9 #9L Ladies fit</p> <p>NAVY GOLF SHIRT</p> <p><small>LADIES' NEWLY DESIGNED</small></p>  <p>\$34</p> <p><small>School Donation Price: \$48</small></p>	
<p>ITEM # 10</p> <p>50/50 HOODED S/S</p>  <p>\$25</p> <p><small>School Donation Price: \$32</small></p>	<p>ITEM # 11</p> <p>50/50 HOODED S/S</p>  <p>\$28</p> <p><small>School Donation Price: \$37</small></p>	<p>ITEM # 12</p> <p>ATC™ DYNAMIC HEATHER FLEECE TWO TONE HOODED YOUTH SWEATSHIRT: Y08AT</p>  <p>\$40</p> <p><small>School Donation Price: \$56</small></p>		

Report Absences or Late

If your child is going to be absent / late, please report via Edsby before the bell time.

If you do not have an Edsby account or need help with setting it up, please contact the office @ **905-887-2427**.

TO REPORT A STUDENT ABSENCE/LATE:

LOGIN TO: yrdsb.edsby.com/ / CALL 905.887.2427



PJ Library Goes to School

✧ Jewish Heritage Month Initiative for Kindergarten to Grade 3 ✧

PJ Library Goes to School is a new initiative by the YRDSB, in partnership with PJ Library, a joint program by UJA Federation of Greater Toronto and the Harold Grinspoon Foundation. PJ Library Goes to School provides opportunities for Jewish parents and guardians to share affirmative Jewish stories with students of all identities in Kindergarten to Grade 3 via virtual meet platforms such as Google Meet or Zoom during Jewish Heritage Month 2021.

When?: Virtual readings will take place during the month of May, recognized as Jewish Heritage Month by the Government of Canada.

Participating parents/guardians will receive a PJ Library picture book by mail through their student's school for the purpose of providing a virtual reading to their child's class. Participating parents/guardians should arrange a time for the virtual reading with their child's school teacher.

HOW TO SIGN UP:

Interested Jewish parents/guardians are to complete an [online registration form](#).

DEADLINE: March 11, 2021.

ELIGIBILITY:

This program is designed to give opportunities for Jewish parents/guardians to share their heritage with students of all identities in Kindergarten to Grade 3 with the support of their child's teacher and school principal via virtual meet platforms such as Google Classroom or Zoom.

Parent/guardian must meet eligibility criteria to lead a book reading on Jewish heritage or identity:

- Identifies as a Jewish parent/guardian of a child at a YRDSB school in Kindergarten, Grade 1, Grade 2 or Grade 3.
- Parent/Guardian has communicated to their child's teacher that they would like to participate in this program and has the teacher's support. The school teacher will communicate to the school principal that the parent/guardian would like to participate in this program.
- The parent/guardian feels comfortable providing a book reading in English.
- The parent/guardian is able to make themselves available during school hours to provide a virtual book reading to their child's class.

For more information, please contact YRDSB Community Partnership Developer (CPD):
Jewish Community, Leonora Buskin, leonora.buskin@yrdsb.ca.





**Nominations
Now Open!**

15th Annual York Region Character Community Awards

**Do you know a member of our community who has
demonstrated great character?**

Why not honor them by submitting a nomination for a Character Award?



Award Categories

Citizen of Character Award: All Ages

Non-Profit Leader of Character Award

Community Hero Award

Gianluca Cellucci Memorial Award

Business Leader of Character Award

School of Character Award: YRDSB

School of Character Award: YCDSB

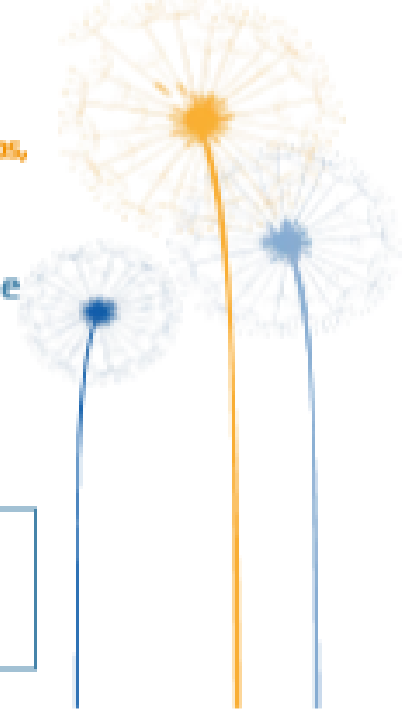
Don Cousens Community Impact Award

**The Character Community Awards recognizes individuals, groups,
schools and businesses across York Region for demonstrating
exemplary character attributes, including:**

**Optimism
Respect
Integrity
Inclusiveness**

**Initiative
Responsibility
Compassion
Fairness**

**Perseverance
Honesty
Courage
Humility**



Please click here for the 2021 Nomination Form:

<http://www.charactercommunity.com>

Live each day with ...

**Compassion, Courage, Fairness, Honesty, Inclusiveness, Initiative, Integrity, Optimism,
Perseverance, Respect, Responsibility and Humility**



SPEAKER'S IDOL 2021

CHANGING THE WORLD, ONE SPEECH AT A TIME

Speeches Due:
Friday, March 12, 2021



GRADE 6-12 STUDENTS, HERE IS YOUR CHANCE TO BE HEARD!

Prepare a 3-minute speech sharing your thoughts on how to make positive change while commenting on Holocaust survivor Simon Wiesenthal's quote:

"The history of humankind is the history of crimes and history can repeat. So information is a defense. Through this we can build, we must build, a defense against repetition."

See backside for more information

SPEAKER'S IDOL 2021

FINALIST ROUND: THURSDAY, MAY 13, 2021 - VIRTUAL PROGRAM

Speeches **must** include Simon Wiesenthal's quote, "The history of humankind is the history of crimes and history can repeat. So information is a defense. Through this we can build, we must build, a defense against repetition" as you share your thoughts on how to create positive change in the world.

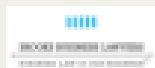
To apply, submit your 3-minute speech to education@fswc.ca by Friday, March 12, 2021

ADDITIONAL INFORMATION

- All speeches must be submitted as a Word document or in PDF format, double-spaced, using 12 point font
- Include a title page with your: name, grade, phone number, email, school name, teacher's name and teacher's email address
- Speeches will be evaluated in 2 categories: Grades 6-8 and Grades 9-12
- Top 10 contestants in each category will participate in a virtual semi-finalist video round
- Top 5 contestants from the semi-finalist round will be invited to record and present their speeches to a panel of judges where grand prizes will be awarded.

PRIZES & AWARDS

All prizes will be presented to winners after the event. Prizes are non-negotiable and non-transferable. By entering this competition, participants agree to waive any right to claim any ambiguity or error in the selection of winners and agree to all decisions of the judging panel chosen by Friends of Simon Wiesenthal Center for Holocaust Studies, whose decisions are final. Finalists may be invited to special events throughout the year including Freedom Day, State of the Union and Spirit of Hope.



Prizes sponsored by Brooks Business Lawyers and Tracie Graff



Friends of Simon Wiesenthal Center for Holocaust Studies
www.fswc.ca | 416.864.9735 | education@fswc.ca

Inclement Weather Procedures During the Pandemic

Dear families,

This year, we are doing many things differently in our schools to help reduce the spread of COVID-19 and support the health and safety of our students, staff members and families. As we enter the colder months, we have also reviewed what it will look like when inclement weather days are declared and school transportation is cancelled.



We usually try to keep schools open as much as possible, and in previous years, schools have remained open when school transportation is cancelled. This year, however, given the importance of adhering to our [health and safety guidelines](#), we have made the decision to **close schools to students when an inclement weather day is declared and school transportation is cancelled. Please do not send your child to school when an inclement weather day is declared.** We are unable to guarantee appropriate coverage for students on inclement weather days when school transportation is closed and classes cannot be combined.

Please take the time to make plans in the event of an inclement weather day school closure. Please note that before and after care programs will not be operating on inclement weather days. For on-site, full-day child care, please confirm with your childcare operator. We recognize that this may be an inconvenience for some families. This decision was not made lightly and made to prioritize the health and safety of students, staff members and families.

There are rare occasions when school transportation is cancelled due to extreme cold weather and not road conditions, and schools will remain open for students.

Student learning will continue:

- Students attending elementary school in person will be provided with learning activities for the day through their Google classroom and teachers will be available online to support students.
- Students attending secondary school in person will shift to virtual learning for all of their classes for the day.
- Elementary and secondary virtual schools will operate as normal.

Communication to families

Decisions about school transportation and school closures will be made as early as possible and no later than 6:00 a.m. We will do our best to notify families in advance. Our priority continues to be the safety of our students, staff members and families. If you have any questions, please speak with your school principal.

Transportation cancellations or school closures will also continue to be communicated through:

- Student Transportation Services website: www.schoolbuscity.com
- Student Transportation Hotline: 1-877-330-3001
- [Board website](#) and school websites
- [@YRDSB](#) Twitter account
- Radio and TV media outlets

Families who have provided the school with their cell phone will also receive a text message, unless you have opted out of this service. Please contact your school if you have any questions.

For more information on inclement weather days, please visit our website www.yrdsb.ca.